



GHANA STATISTICAL SERVICE (GSS)
Statistics for Development and Progress

Statistical Bulletin

(PRODUCER PRICE INDEX PPI)
January, 2019

Ghana Statistical Service (GSS)

Statistical Bulletin

PRODUCER PRICE INDEX (PPI)

January, 2019

Date: February 20, 2019

Producer Price Index (PPI)
January 2019

CONTENTS

HIGHLIGHTS FOR JANUARY 2019	2
Table 1: Producer Price Index for January 2018 - January 2019	4
Table 2: Producer Price Index (Sep.2006=100) by sectors for January 2018 - January 2019	5
Table 3: Producer Price Index: Yearly Change Rates by Sector for January 2018 - January 2019 (%)	6
Table 4: Producer Price Index: Monthly Change Rates by Sector for January 2018 - January 2019 (%)	7
Table 5: Mining And Quarrying: Producer Price Index (Sept 2006=100) January 2018 - January 2019	8
Table 6: Mining and Quarrying: Yearly Change Rates for January 2018 - January 2019 (%)	9
Table 7: Mining and Quarrying: Monthly Change Rates for January 2018 - January 2019 (%)	10
Table 8: Manufacturing Producer Price Index (Sept 2006=100) for January 2018 - January 2019	11
Table 9: Manufacturing: Yearly Change Rates for January 2018 - January 2019 (%)	17
Table 10: Manufacturing: Monthly Change Rates for January 2018 - January 2019 (%)	23
Table 11: Utilities: Producer Price Index (Sept 2006=100) for January 2018 - January 2019	28
Table 12: Utilities: Yearly Change Rates for January 2018 - January 2019 (%)	29
Table 13: Utilities: Monthly Change Rates for January 2018 - January 2019 (%)	30

HIGHLIGHTS FOR JANUARY 2019

Producer Price Inflation Rate in January 2019 is 3.4%

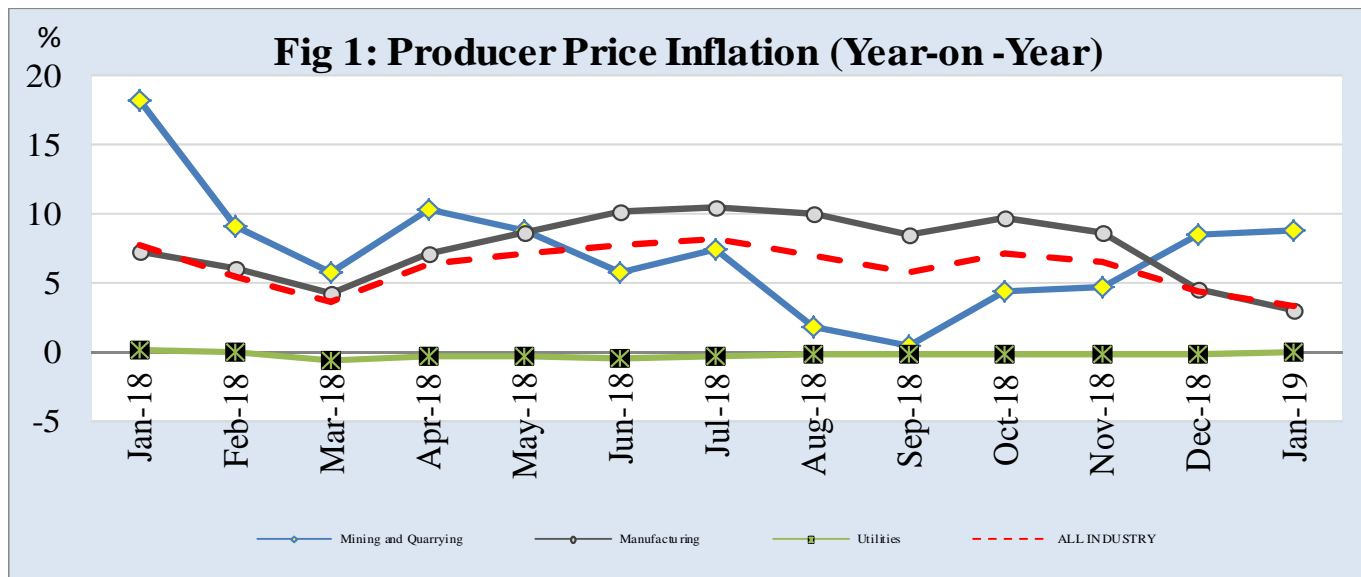
The Producer Price Index (PPI) measures the average change over time in the prices received by domestic producers for the production of their goods and services. The PPI for Ghana reports the producer price indices with reference to September 2006, the base period. This release shows the annual (year-on-year) and monthly producer inflation rates for all industry and three major sub-sectors of industry (Mining and Quarrying, Manufacturing and Utilities) for the last twelve months. The figures for the month of December 2018 are provisional, and are subject to revision when additional data become available. All other indicators are final.

The Producer Price Inflation rate for January 2019 was 3.4 percent. This rate indicates that, between January 2018 and January 2019 (year-on-year), the PPI increased by 3.4 percent. This rate represents a 1.0 percentage point decrease in producer inflation relative to the rate recorded in December 2018 (4.4%). The month-on-month change in producer price index between December 2018 and January 2019 was 0.3 percent.

The producer price inflation in the Mining and Quarrying sub-sector increased by 0.4 percentage points over the December 2018 rate of 8.5 percent to record 8.9 percent in January 2019. The producer inflation for Manufacturing which constitutes more than two-thirds of total industry decreased by 1.5 percentage points to record 3.0 percent. The utilities sub-sector recorded the same inflation rate (-0.1%) as the rate for December 2018.

During the month of January 2019, five out of the sixteen major groups in the manufacturing sub-sector recorded inflation rates higher than the sector average of 3.0 percent. Manufacture of basic metals recorded the highest inflation rate of 16.8 percent, while Manufacture of machinery and equipment n.e.c. recorded 0.0 percent

PPI by Sectors; January 2018 to January 2019



Manufacture of coke, refined petroleum products etc: Annual rate was 3.8 percent for January 2019, as compare to 10.1 percent in December 2018.

Manufacture of other non-metallic mineral product: Annual rate was 2.7 percent for January 2019 compared to 3.1 in December 2018.

Manufacture of motor vehicles, trailers and semi-trailers: Annual rate was 4.7 percent in January 2019 as compared to 6.2 percent last month.

Electricity and Water Supply: the inflation rate was -0.1 percent in January 2019, same as the rate recorded in December 2018.

More detailed time series data is posted on the GSS website [www.statsghana.gov.gh].

The next release date is 20th March 2019

Table 1: Producer Price Index for January 2018 - January 2019

Year / Month	Index level	Monthly	Yearly
	Sept 2006=100	Change Rate (%)	
January-18	581.0	1.2	7.7
February-18	581.4	0.1	5.5
March-18	579.5	-0.3	3.7
April-18	585.0	0.9	6.4
May-18	588.9	0.7	7.1
June-18	596.0	1.2	7.7
July-18	597.4	0.2	8.2
August-18	596.9	-0.1	7.0
September-18	600.4	0.6	5.8
October-18	610.0	1.6	7.2
November-18	606.6	-0.6	6.5
December-18	599.3	-1.2	4.4
January-19	p 600.8	p 0.3	p 3.4

p: provisional

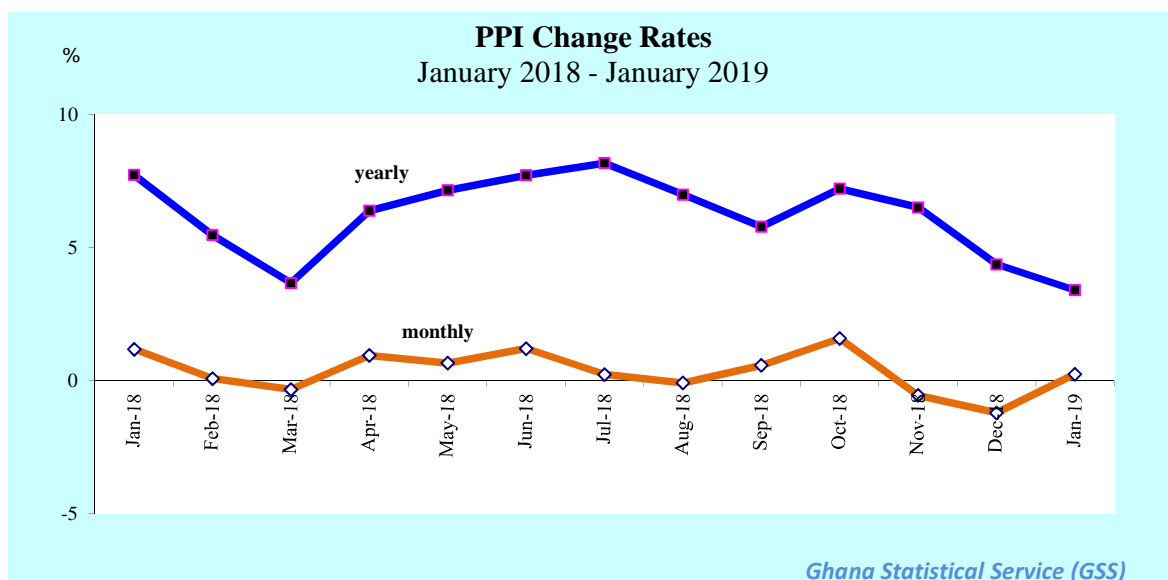


Table 2: Producer Price Index (Sep.2006=100) by sectors for January 2018 - January 2019

Year / Month	Mining and Quarrying	Manufacturing	Utilities	ALL INDUSTRY
<i>ISIC</i>	<i>C</i>	<i>D</i>	<i>E</i>	<i>C+D+E</i>
<i>weight</i>	13.97	69.75	16.28	100.00
January-2018	1,145.9	462.4	797.3	581.0
February-2018	1,151.7	462.5	796.9	581.4
March-2018	1,144.2	461.5	792.8	579.5
April-2018	1,152.1	467.2	792.7	585.0
May-2018	1,126.0	474.1	792.8	588.9
June-2018	1,136.1	481.5	793.2	596.0
July-2018	1,141.8	482.4	794.8	597.4
August-2018	1,125.7	483.3	795.3	596.9
September-2018	1,142.5	485.7	795.7	600.4
October-2018	1,154.9	495.8	796.0	610.0
November-2018	1,159.3	491.4	796.0	606.6
December-2018	1,193.4	479.6	796.2	599.3
January-2019	p 1,247.7	p 476.4	p 796.9	p 600.8

p: provisional

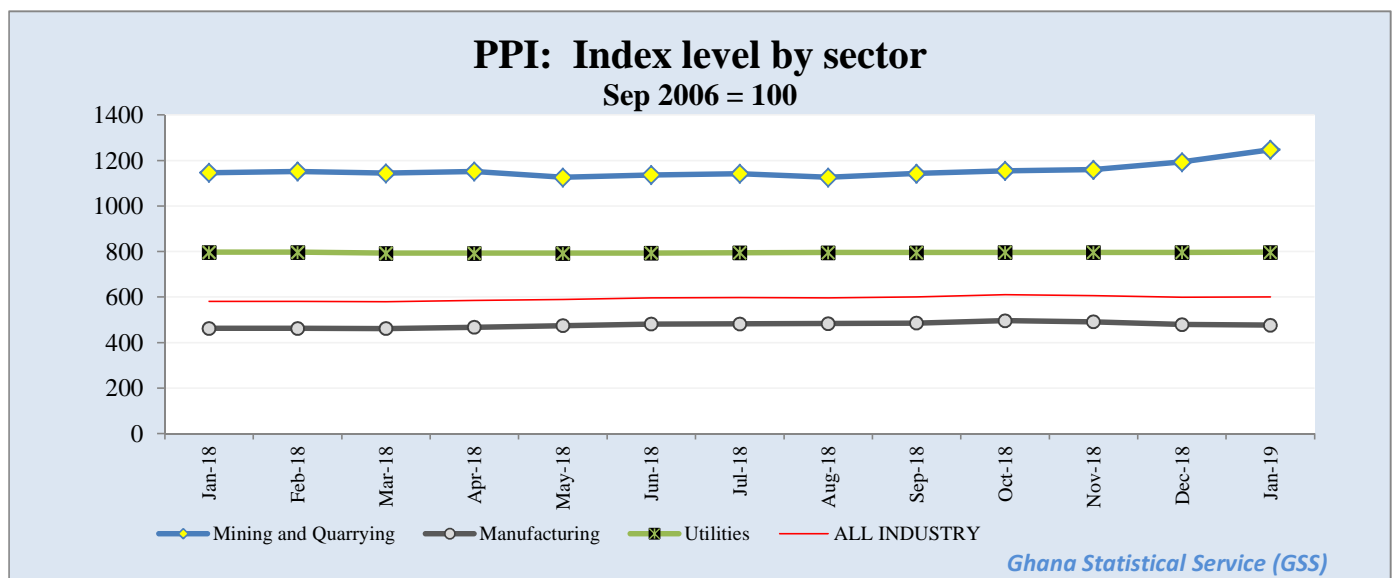


Table 3: Producer Price Index: Yearly Change Rates by Sector for January 2018 - January 2019 (%)

Year / Month	Mining and Quarrying	Manufacturing	Utilities	ALL INDUSTRY
	<i>C</i>	<i>D</i>	<i>E</i>	<i>C+D+E</i>
	<i>ISIC</i>			
January-2018	18.3	7.3	0.2	7.7
February-2018	9.2	6.0	0.0	5.5
March-2018	5.8	4.2	-0.6	3.7
April-2018	10.3	7.2	-0.3	6.4
May-2018	8.9	8.6	-0.4	7.1
June-2018	5.8	10.2	-0.4	7.7
July-2018	7.5	10.4	-0.2	8.2
August-2018	1.9	10.0	-0.2	7.0
September-2018	0.4	8.5	-0.2	5.8
October-2018	4.4	9.7	-0.1	7.2
November-2018	4.7	8.6	-0.1	6.5
December-2018	8.5	4.5	-0.1	4.4
January-2019	p 8.9	p 3.0	p -0.1	p 3.4

p: provisional

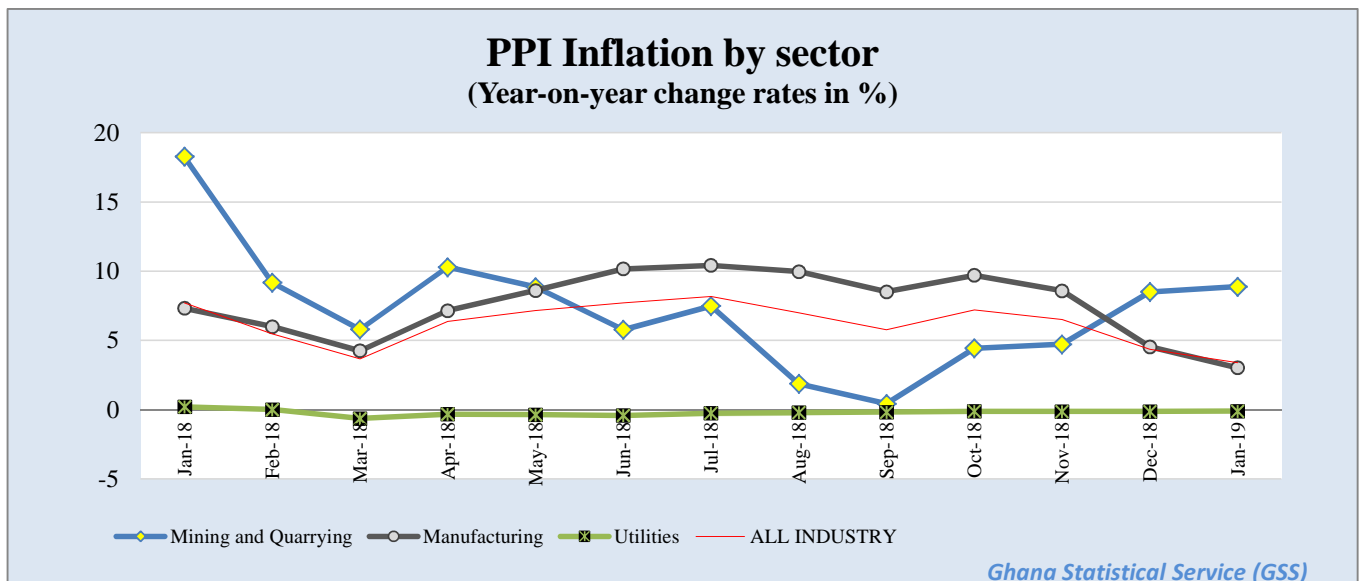


Table 4: Producer Price Index: Monthly Change Rates by Sector for January 2018 - January 2019 (%)

Year / Month	Mining and Quarrying	Manufacturing	Utilities	ALL INDUSTRY
<i>ISIC</i>	<i>C</i>	<i>D</i>	<i>E</i>	<i>C+D+E</i>
<i>weight</i>	13.97	69.75	16.28	100.00
January-2018	4.2	0.8	0.0	1.2
February-2018	0.5	0.0	-0.0	0.1
March-2018	-0.6	-0.2	-0.5	-0.3
April-2018	0.7	1.2	-0.0	0.9
May-2018	-2.3	1.5	0.0	0.7
June-2018	0.9	1.6	0.1	1.2
July-2018	0.5	0.2	0.2	0.2
August-2018	-1.4	0.2	0.1	-0.1
September-2018	1.5	0.5	0.1	0.6
October-2018	1.1	2.1	0.0	1.6
November-2018	0.4	-0.9	-0.0	-0.6
December-2018	2.9	-2.4	0.0	-1.2
January-2019	p 4.6	p -0.7	p 0.1	p 0.3

p: provisional

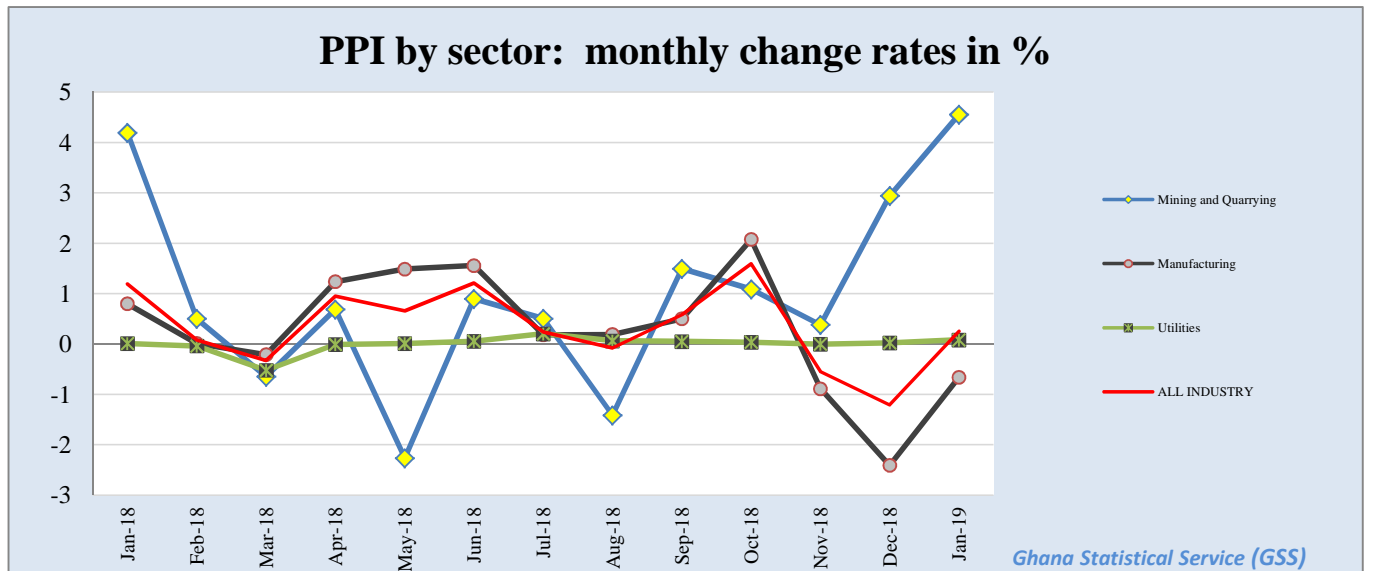


Table 5: Mining And Quarrying: Producer Price Index (Sept 2006=100) January 2018 - January 2019

Year / Month	Mining and Quarrying	Mining of metal ores	Mining of non-ferrous metal ores	Other mining and quarrying	Quarrying of stone, sand & clay	Mining and quarrying n.e.c.
<i>ISIC</i>	<i>C</i>	<i>C13</i>	<i>C132</i>	<i>C14</i>	<i>C141</i>	<i>C142</i>
<i>weight</i>	100.00	95.01	95.01	4.99	3.42	0.87
January-2018	1145.9	1223.4	1223.4	224.7	183.8	494.9
February-2018	1151.7	1229.8	1229.8	224.7	183.8	494.9
March-2018	1144.2	1221.5	1221.5	224.7	183.8	494.9
April-2018	1152.1	1230.3	1230.3	224.7	183.8	494.9
May-2018	1126.0	1201.3	1201.3	224.7	183.8	494.9
June-2018	1136.1	1212.5	1212.5	224.7	183.8	494.9
July-2018	1141.8	1218.9	1218.9	224.7	183.8	494.9
August-2018	1125.7	1200.9	1200.9	224.7	183.8	494.9
September-2018	1142.5	1219.6	1219.6	224.7	183.8	494.9
October-2018	1154.9	1233.4	1233.4	224.7	183.8	494.9
November-2018	1159.3	1238.2	1238.2	224.7	183.8	494.9
December-2018	1193.4	1275.6	1275.6	226.9	183.8	519.3
January-2019	p 1247.7	p 1336.1	p 1336.1	p 226.9	p 183.8	p 519.3

p: provisional

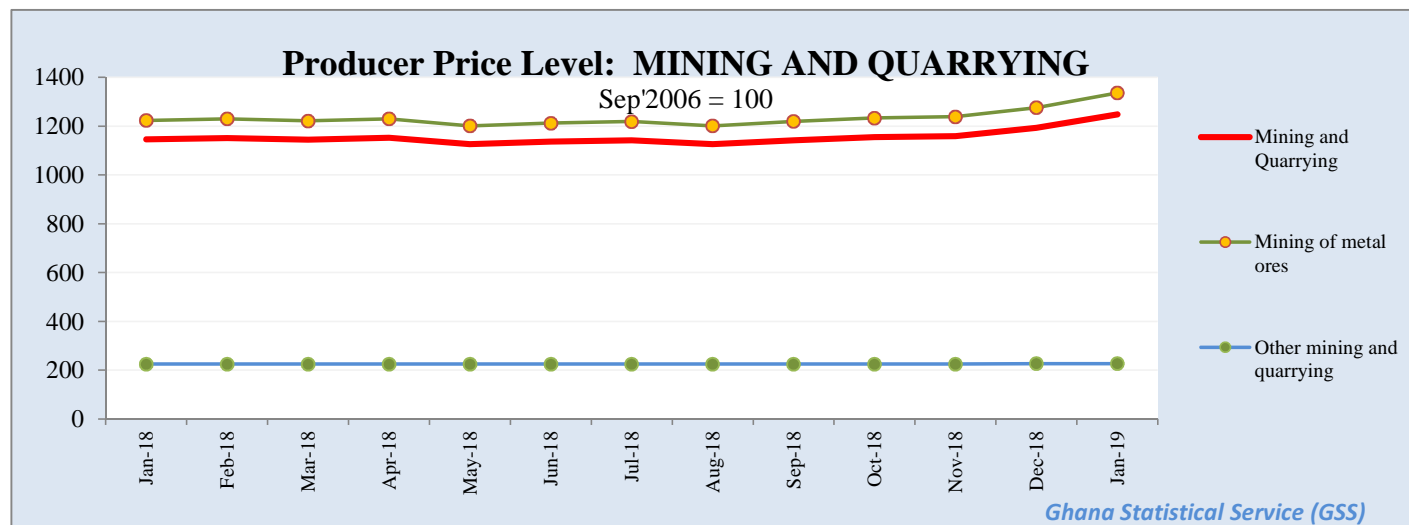


Table 6: Mining and Quarrying: Yearly Change Rates for January 2018 - January 2019 (%)

Year / Month	Mining and Quarrying	Mining of metal ores	Mining of non-ferrous metal ores	Other mining and quarrying	Quarrying of stone, sand & clay	Mining and quarrying n.e.c.
ISIC	C	C13	C132	C14	C141	C142
January-2018	18.3	19.1	19.1	-0.1	-0.1	0.0
February-2018	9.2	9.6	9.6	-0.1	-0.1	0.0
March-2018	5.8	6.0	6.0	0.0	0.0	0.0
April-2018	10.3	10.7	10.7	0.0	0.0	0.0
May-2018	8.9	9.2	9.2	0.0	0.0	0.0
June-2018	5.8	6.0	6.0	0.0	0.0	0.0
July-2018	7.5	7.8	7.8	0.0	0.0	0.0
August-2018	1.9	2.0	2.0	0.0	0.0	0.0
September-2018	0.4	0.4	0.4	0.0	0.0	0.0
October-2018	4.4	4.6	4.6	0.0	0.0	0.0
November-2018	4.7	4.9	4.9	0.0	0.0	0.0
December-2018	8.5	8.8	8.8	1.0	0.0	4.9
January-2019	p 8.9	p 9.2	p 9.2	p 1.0	p 0.0	p 4.9

p: provisional

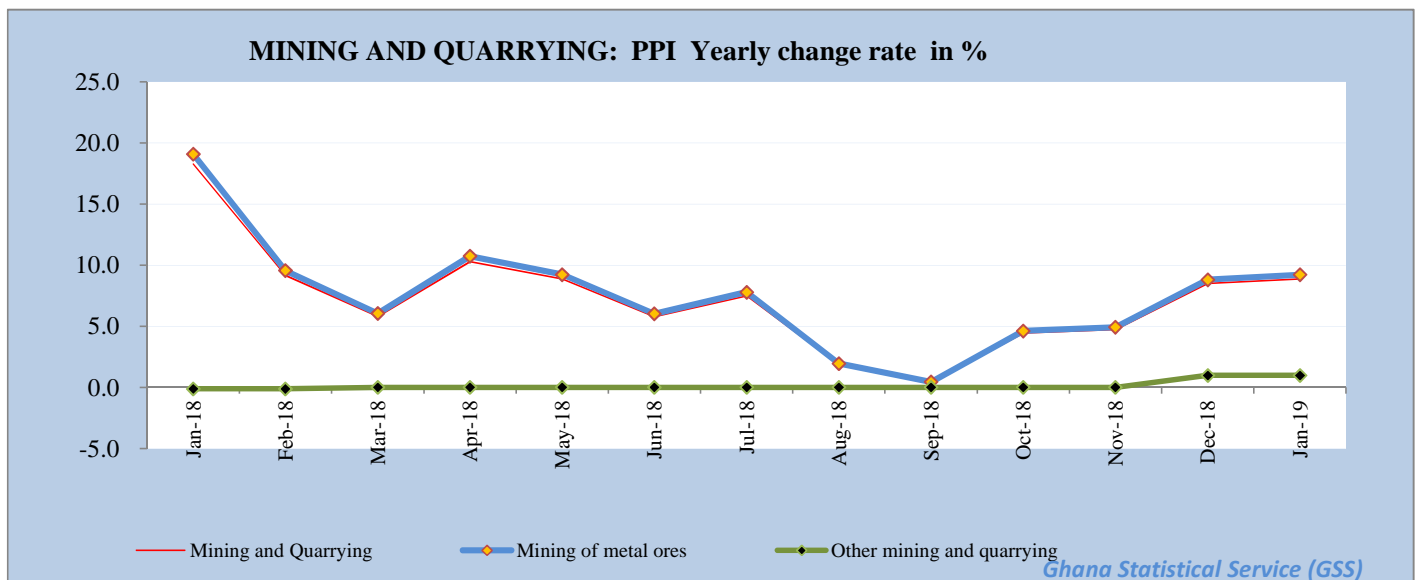


Table 7: Mining and Quarrying: Monthly Change Rates for January 2018 - January 2019 (%)

Year / Month	Mining and Quarrying	Mining of metal ores	Mining of non-ferrous metal ores	Other mining and quarrying	Quarrying of stone, sand & clay	Mining and quarrying n.e.c.
ISIC	C	C13	C132	C14	C141	C142
January-2018	4.2	4.4	4.4	0.0	0.0	0.0
February-2018	0.5	0.5	0.5	0.0	0.0	0.0
March-2018	-0.6	-0.7	-0.7	0.0	0.0	0.0
April-2018	0.7	0.7	0.7	0.0	0.0	0.0
May-2018	-2.3	-2.4	-2.4	0.0	0.0	0.0
June-2018	0.9	0.9	0.9	0.0	0.0	0.0
July-2018	0.5	0.5	0.5	0.0	0.0	0.0
August-2018	-1.4	-1.5	-1.5	0.0	0.0	0.0
September-2018	1.5	1.6	1.6	0.0	0.0	0.0
October-2018	1.1	1.1	1.1	0.0	0.0	0.0
November-2018	0.4	0.4	0.4	0.0	0.0	0.0
December-2018	2.9	3.0	3.0	1.0	0.0	4.9
January-2019	p 4.6	p 4.7	p 4.7	p 0.0	p 0.0	p 0.0

p: provisional

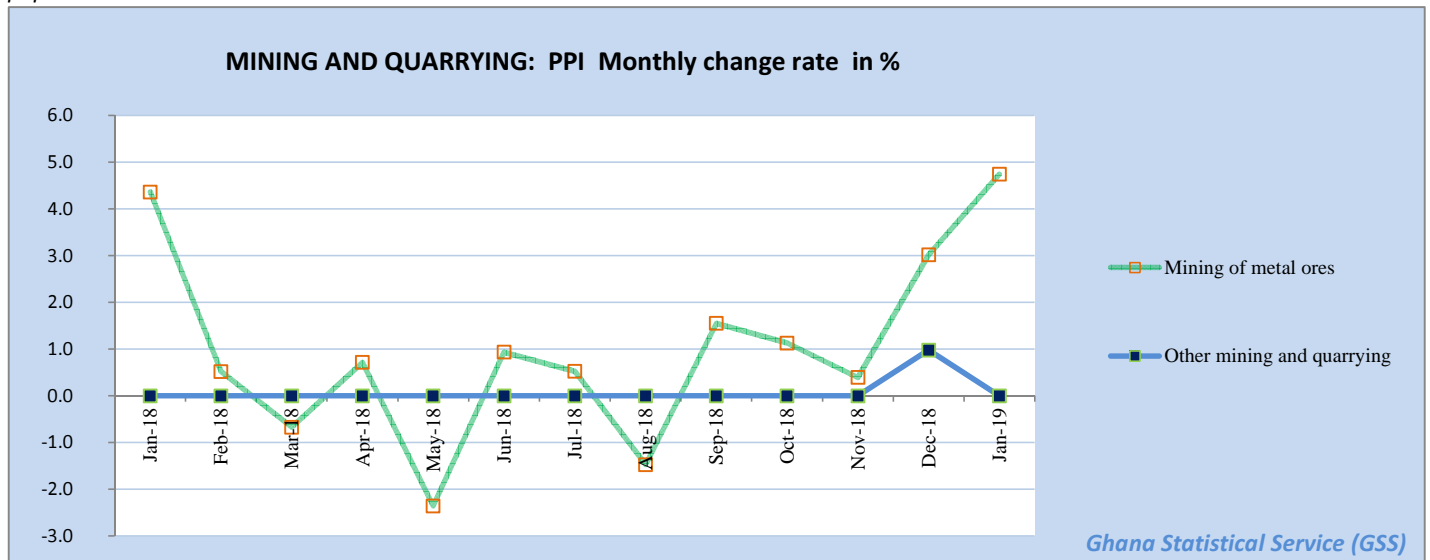


Table 8: Manufacturing Producer Price Index (Sept 2006=100) for January 2018 - January 2019

Year / Month	Manufacturing	Manufacture of food products and beverages	Production, processing, preservation of meat, fish, fruit, vegetables, oils and fats	Manufacture of dairy products	Manufacture of grain mill products, starch products, and prepared animal feeds	Manufacture of other food products	Manufacture of beverages	Manufacture of textiles	Spinning, weaving and finishing of textiles
<i>ISIC</i>	D	D15	<i>D151</i>	<i>D152</i>	<i>D153</i>	<i>D154</i>	<i>D155</i>	D17	<i>D171</i>
<i>weight</i>	100	25.64	4.60	4.31	4.66	4.80	7.27	4.27	4.28
January-2018	462.4	435.4	605.4	357.2	533.9	530.6	361.8	574.1	574.1
February-2018	462.5	434.7	599.7	357.2	533.9	530.6	361.8	574.1	574.1
March-2018	461.5	435.3	597.9	357.2	533.9	539.1	361.8	574.8	574.8
April-2018	467.2	435.9	598.7	357.2	533.9	544.6	361.8	575.4	575.4
May-2018	474.1	434.6	587.6	357.2	533.9	544.6	361.8	580.0	580.0
June-2018	481.5	435.7	596.8	357.2	533.9	545.4	361.8	580.4	580.4
July-2018	482.4	439.4	619.2	357.2	533.9	547.8	365.0	599.5	599.5
August-2018	483.3	438.3	608.0	357.2	533.9	548.3	365.0	600.0	600.0
September-2018	485.7	442.4	614.8	357.2	543.4	571.4	365.0	599.4	599.4
October-2018	495.8	442.9	618.9	357.2	543.4	571.7	365.0	599.6	599.6
November-2018	491.4	442.5	615.2	357.2	543.4	571.7	365.0	599.6	599.6
December-2018	479.6	440.9	600.6	357.2	543.4	571.9	365.0	599.8	599.8
January-2019	p 476.4	p 445.6	p 638.2	p 357.2	p 543.4	p 579.4	p 365.0	p 600.4	p 600.4

p: provisional

Table 8: Manufacturing Producer Price Index (Sept 2006=100) for January 2018 - January 2019

contd.

Year / Month	Tanning of leather; manu facture of luggage, etc	Manufacture of footwear	Manufacture of wood an of articles of straw etc.	Sawmilling and planing of wood	Manufacture of products of wood, cork, straw etc.	Manufacture of paper and paper products	Manufacture of paper and paper products	Publishing, printing and reproduction of rec. media	Publishing	Printing and service activities ...
ISIC	D19	D192	D20	D201	D202	D21	D210	D22	D221	D222
weight	0.12	0.12	9.03	4.94	4.10	0.62	0.62	1.14	0.40	0.74
January-2018	533.9	533.9	354.7	376.2	300.4	533.7	533.7	760.1	665.2	817.5
February-2018	533.9	533.9	354.6	376.2	300.1	533.7	533.7	760.1	665.2	817.5
March-2018	533.9	533.9	354.6	376.2	300.1	533.7	533.7	760.1	665.2	817.5
April-2018	533.9	533.9	354.6	376.2	300.0	533.6	533.6	780.6	665.2	851.8
May-2018	533.9	533.9	354.4	376.2	299.4	533.7	533.7	780.6	665.2	851.8
June-2018	533.9	533.9	354.5	376.2	299.6	534.2	534.2	780.6	665.2	851.8
July-2018	533.9	533.9	354.7	376.2	300.3	537.4	537.4	780.6	665.2	851.8
August-2018	533.9	533.9	354.7	376.2	300.3	538.1	538.1	780.6	665.2	851.8
September-2018	533.9	533.9	354.7	376.2	300.2	538.6	538.6	780.6	665.2	851.8
October-2018	533.9	533.9	354.7	376.2	300.5	539.0	539.0	780.6	665.2	851.8
November-2018	533.9	533.9	354.7	376.2	300.3	539.0	539.0	780.6	665.2	851.8
December-2018	533.9	533.9	354.7	376.2	300.4	539.3	539.3	780.6	665.2	851.8
January-2019	p 533.9	p 533.9	p 354.8	p 376.2	p 300.8	p 540.2	p 540.2	p 780.6	p 665.2	p 851.8

p: provisional

Table 8: Manufacturing Producer Price Index (Sept 2006=100) for January 2018 - January 2019

contd.

Year / Month	Manufacture of coke, refined petroleum products etc.	Manufacture of refined petroleum products	Manufacture of chemicals and chemical products	Manufacture of basic chemicals	Manufacture of other chemical products	Manufacture of man-made fibres	Manufacture of rubber and plastics products	Manufacture of rubber products	Manufacture of plastics products
<i>ISIC</i>	D23	D232	D24	D241	D242	D243	D25	D251	D252
<i>weight</i>	22.94	22.94	10.15	0.54	9.45	0.16	3.90	0.76	3.14
January-2018	455.3	455.3	463.5	394.1	474.5	128.8	431.5	354.6	449.9
February-2018	456.4	456.4	463.5	394.1	474.5	128.8	425.2	325.9	449.9
March-2018	451.5	451.5	463.5	394.1	474.5	128.8	425.1	325.7	449.9
April-2018	466.0	466.0	463.5	394.1	474.5	128.8	421.9	312.1	449.9
May-2018	498.3	498.3	463.5	394.5	474.5	128.8	421.0	308.2	449.9
June-2018	530.4	530.4	463.8	396.7	474.8	128.8	417.8	294.3	450.1
July-2018	522.8	522.8	463.9	405.0	474.8	128.8	422.6	313.2	450.4
August-2018	525.8	525.8	464.0	407.7	474.8	128.8	422.8	313.2	450.7
September-2018	528.3	528.3	464.0	409.8	474.8	128.8	423.9	317.4	450.9
October-2018	570.3	570.3	464.0	411.4	474.8	128.8	424.4	318.7	451.0
November-2018	549.6	549.6	464.0	411.3	474.8	128.8	424.3	318.7	451.0
December-2018	494.2	494.2	464.1	412.3	474.8	128.8	433.5	319.5	462.6
January-2019	p 472.6	p 472.6	p 464.1	p 415.8	p 474.8	p 128.8	p 434.5	p 322.5	p 462.9

p: provisional

Table 8: Manufacturing Producer Price Index (Sept 2006=100) for January 2018 - January 2019
contd.

Year / Month	Manufacture of other non-metallic min. products	Manufacture of non-metallic mineral products n.e.c.	Manufacture of basic metals	Manufacture of basic iron and steel	Manufacture of basic precious and non-ferrous metals	Manufacture of fabricated metal products, ...	Manufacture of structural metal products, tanks, reservoirs ...	Manufacture of other fabricated metal products ...	Manufacture of machinery ... n.e.c.	Manufacture of special-purpose machinery
ISIC	D26	D269	D27	D271	D272	D28	D281	D289	D29	D292
weight	8.20	8.20	5.02	2.02	2.65	3.70	1.55	2.15	0.42	0.42
January-2018	485.1	485.1	421.0	441.0	406.5	664.3	551.4	759.6	1065.3	1065.3
February-2018	485.1	485.1	426.0	441.0	414.9	664.6	551.4	760.2	1065.3	1065.3
March-2018	485.1	485.1	425.9	441.0	414.7	664.6	551.4	760.2	1065.3	1065.3
April-2018	485.8	485.8	467.3	547.1	414.4	664.6	551.4	760.2	1065.3	1065.3
May-2018	485.0	485.0	467.5	547.1	414.7	664.6	551.4	760.2	1065.3	1065.3
June-2018	485.8	485.8	470.3	552.0	416.3	664.6	551.4	760.3	1065.3	1065.3
July-2018	482.7	482.7	487.8	589.2	422.5	665.8	553.5	760.6	1065.3	1065.3
August-2018	487.0	487.0	489.3	589.6	424.5	665.8	553.5	760.6	1065.3	1065.3
September-2018	488.5	488.5	488.7	585.1	426.1	670.3	553.5	769.4	1065.3	1065.3
October-2018	497.8	497.8	489.5	585.4	427.2	670.3	553.5	769.5	1065.3	1065.3
November-2018	497.5	497.5	489.5	585.4	427.2	670.5	553.5	769.9	1065.3	1065.3
December-2018	497.8	497.8	490.1	585.5	428.0	675.0	556.0	776.2	1065.3	1065.3
January-2019	p 498.3	p 498.3	p 491.9	p 586.0	p 430.5	p 675.0	p 556.0	p 776.3	p 1065.3	p 1065.3

p: provisional

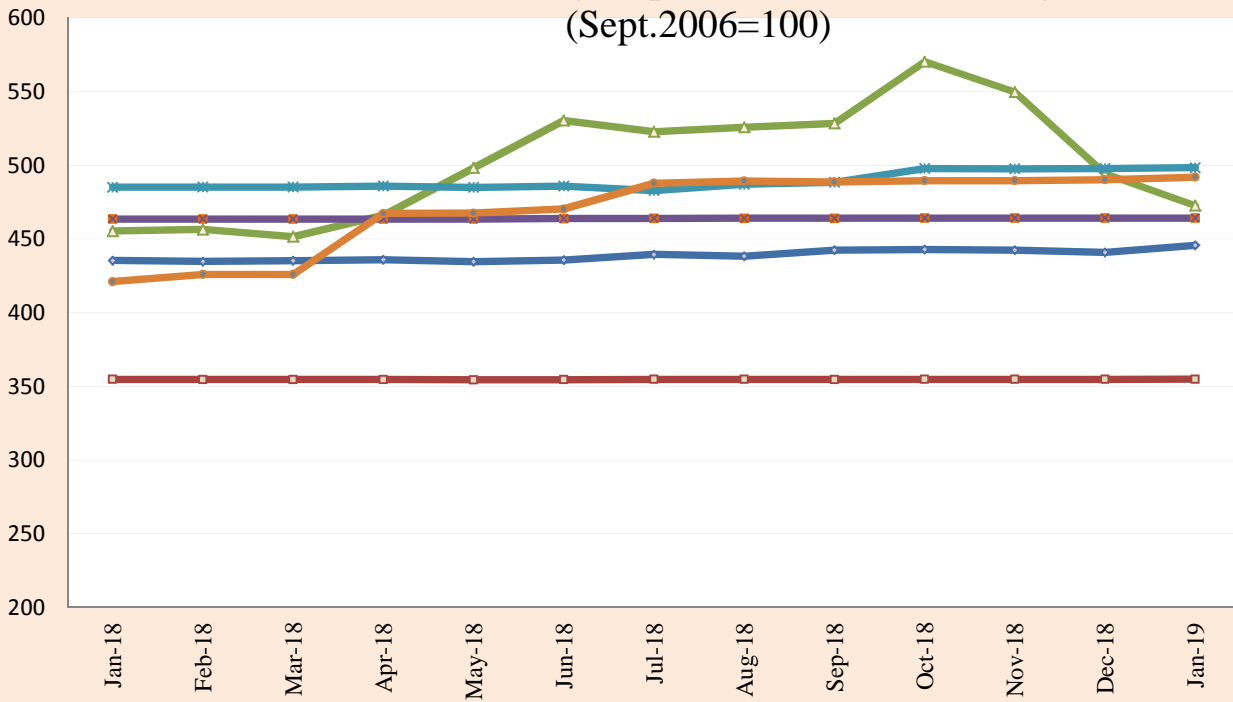
Table 8: Manufacturing Producer Price Index (Sept 2006=100) for January 2018 - January 2019

contd.

Year / Month	Manufacture of electrical machinery and apparatus n.e.c.	Manufacture of insulated wire and cable	Manufacture of motor vehicles, trailers and semi-trailers	Manufacture of bodies for motor vehicles, trailers and semi-trailers	Manufacture of furniture; manufacturing n.e.c.	Manufacture of furniture	Manufacturing n.e.c.
<i>ISIC</i>	D31	<i>D313</i>	D34	<i>D342</i>	D36	<i>D361</i>	<i>D369</i>
<i>weight</i>	0.41	<i>0.41</i>	0.05	<i>0.05</i>	2.44	<i>2.33</i>	<i>0.11</i>
January-2018	386.9	386.9	521.6	521.6	670.1	666.5	804.3
February-2018	386.9	386.9	515.2	515.2	670.1	666.5	804.3
March-2018	386.9	386.9	526.1	526.1	670.1	666.5	804.3
April-2018	386.9	386.9	522.6	522.6	670.1	666.5	804.3
May-2018	386.9	386.9	503.8	503.8	670.1	666.5	804.3
June-2018	386.9	386.9	509.4	509.4	670.1	666.5	804.3
July-2018	387.1	387.1	531.4	531.4	670.9	667.4	804.3
August-2018	387.1	387.1	531.5	531.5	670.9	667.4	804.3
September-2018	387.1	387.1	529.3	529.3	688.0	684.9	804.3
October-2018	387.2	387.2	537.9	537.9	688.0	684.9	804.3
November-2018	387.2	387.2	532.3	532.3	688.0	684.9	804.3
December-2018	387.2	387.2	535.7	535.7	688.3	684.9	814.9
January-2019	p 387.2	p 387.2	p 546.0	p 546.0	p 698.9	p 695.7	p 818.1

p: provisional

PPI for Selected Subgroups in the Manufacturing Sector (Sept.2006=100)



Ghana Statistical Service (GSS)

Table 9: Manufacturing: Yearly Change Rates for January 2018 - January 2019 (%)

Year / Month	Manufacturing	Manufacture of food products and beverages	Production, processing, preservation of meat, fish, fruit, vegetables, oils and fats	Manufacture of dairy products	Manufacture of grain mill products, starch products, and prepared animal feeds	Manufacture of other food products	Manufacture of beverages	Manufacture of textiles	Spinning, weaving and finishing of textiles
<i>ISIC</i>	D	D15	<i>D151</i>	<i>D152</i>	<i>D153</i>	<i>D154</i>	<i>D155</i>	D17	<i>D171</i>
<i>weight</i>	100	25.64	4.60	4.31	4.66	4.80	7.27	4.27	4.28
January-2018	7.3	-3.1	-6.2	1.5	-2.4	-1.8	-6.8	10.0	10.0
February-2018	6.0	-3.3	-12.3	1.5	0.0	1.1	-6.8	9.8	9.8
March-2018	4.2	-3.7	-13.3	0.0	0.0	2.7	-6.8	9.7	9.7
April-2018	7.2	-0.8	5.5	0.0	0.0	2.0	-6.8	10.2	10.2
May-2018	8.6	-1.2	2.6	0.0	0.0	2.2	-6.7	11.1	11.1
June-2018	10.2	-1.9	-0.2	0.0	0.0	0.0	-6.9	9.8	9.8
July-2018	10.4	-0.6	6.8	0.0	0.0	0.4	-6.1	14.2	14.2
August-2018	10.0	-0.8	3.4	0.0	0.0	3.3	-6.1	14.1	14.1
September-2018	8.5	1.6	2.2	0.0	1.8	6.3	0.9	11.9	11.9
October-2018	9.7	1.9	3.4	0.0	1.8	7.9	0.9	11.9	11.9
November-2018	8.6	1.6	1.3	0.0	1.8	7.8	0.9	11.8	11.8
December-2018	4.5	1.3	-0.7	0.0	1.8	7.8	0.9	11.8	11.8
January-2019	p 3.0	p 2.4	p 5.4	p 0.0	p 1.8	p 9.2	p 0.9	p 4.6	p 4.6

p: provisional

Table 9: Manufacturing Producer Price Index Yearly Change Rates for January 2018 - January 2019 (%)

contd.

Year / Month	Tanning of leather; manufacture of luggage, etc	Manufacture of footwear	Manufacture of wood and of articles of straw etc.	Sawmilling and planing of wood	Manufacture of products of wood, cork, straw etc.	Manufacture of paper and paper products	Manufacture of paper and paper products	Publishing, printing and reproduction of rec. media	Publishing	Printing and service activities ...
<i>ISIC</i>	D19	<i>D192</i>	D20	<i>D201</i>	<i>D202</i>	D21	<i>D210</i>	D22	<i>D221</i>	<i>D222</i>
<i>weight</i>	0.12	<i>0.12</i>	9.03	<i>4.94</i>	<i>4.10</i>	0.62	<i>0.62</i>	1.14	<i>0.40</i>	<i>0.74</i>
January-2018	1.1	1.1	4.0	3.1	6.4	0.4	0.4	0.0	0.0	0.0
February-2018	1.1	1.1	3.8	3.1	5.8	0.1	0.1	0.4	0.0	0.7
March-2018	1.1	1.1	2.8	3.1	1.8	-0.2	-0.2	0.5	0.0	0.7
April-2018	1.1	1.1	3.8	3.1	6.0	0.5	0.5	3.2	0.0	4.9
May-2018	1.1	1.1	3.8	3.1	5.8	0.4	0.4	3.2	0.0	4.9
June-2018	1.1	1.1	3.8	3.1	5.8	0.3	0.3	3.2	0.0	4.9
July-2018	1.1	1.1	3.7	3.1	5.4	0.8	0.8	3.2	0.0	4.9
August-2018	1.1	1.1	2.5	1.5	5.2	0.9	0.9	3.2	0.0	4.9
September-2018	1.1	1.1	2.5	1.5	5.3	1.0	1.0	3.2	0.0	4.9
October-2018	1.1	1.1	0.9	1.5	0.8	1.1	1.1	3.2	0.0	4.9
November-2018	0.0	0.0	0.9	1.5	0.7	1.0	1.0	3.2	0.0	4.9
December-2018	0.0	0.0	0.1	0.0	0.2	1.1	1.1	3.2	0.0	4.9
January-2019	p 0.0	p 0.0	p 0.0	p 0.0	p 0.1	p 1.2	p 1.2	p 2.7	p 0.0	p 4.2

p: provisional

Table 9: Manufacturing: Yearly Change Rates for January 2018 - January 2019 (%)

contd.

Year / Month	Manufacture of coke, refined petroleum products etc.	Manufacture of refined petroleum products	Manufacture of chemicals and chemical products	Manufacture of basic chemicals	Manufacture of other chemical products	Manufacture of man-made fibres	Manufacture of rubber and plastic products	Manufacture of rubber products	Manufacture of plastics products
<i>ISIC</i>	D23	D232	D24	D241	D242	D243	D25	D251	D252
<i>weight</i>	22.94	22.94	10.15	0.54	9.45	0.16	3.90	0.76	3.14
January-2018	29.0	29.0	3.2	7.6	3.2	0.0	4.8	26.3	0.7
February-2018	22.8	22.8	2.9	5.8	2.9	0.0	2.4	11.7	0.5
March-2018	15.9	15.9	2.8	4.5	2.9	0.0	2.2	11.2	0.4
April-2018	22.7	22.7	2.9	7.6	2.9	0.0	1.9	7.9	0.7
May-2018	35.5	35.5	-2.6	7.7	-2.7	0.0	0.6	2.3	0.2
June-2018	44.2	44.2	0.7	4.1	0.7	0.0	-0.5	-4.4	0.3
July-2018	42.2	42.2	0.7	4.5	0.7	0.0	-0.7	-5.4	0.4
August-2018	41.6	41.6	-0.1	3.6	-0.2	0.0	-0.2	-2.7	0.4
September-2018	31.1	31.1	0.4	4.8	0.3	0.0	-0.4	-3.6	0.2
October-2018	36.1	36.1	0.4	4.8	0.3	0.0	0.1	-1.0	0.3
November-2018	30.6	30.6	0.8	4.8	0.7	0.0	0.0	-1.2	0.3
December-2018	10.1	10.1	0.8	5.1	0.7	0.0	2.3	-0.1	2.8
January-2019	p 3.8	p 3.8	p 0.1	p 5.5	p 0.1	p 0.0	p 0.7	-p 9.0	p 2.9

p: provisional

Table 9: Manufacturing: Yearly Change Rates for January 2018 - January 2019 (%)

contd.

Year / Month	Manufacture of other non-metallic min. products	Manufacture of non-metallic mineral products n.e.c.	Manufacture of basic metals	Manufacture of basic iron and steel	Manufacture of basic precious and non-ferrous metals	Manufacture of fabricated metal products, ...	Manufacture of structural metal products, tanks, reservoirs ...	Manufacture of other fabricated metal products ...	Manufacture of machinery ... n.e.c.	Manufacture of special-purpose machinery
<i>ISIC</i>	D26	<i>D269</i>	D27	<i>D271</i>	<i>D272</i>	D28	<i>D281</i>	<i>D289</i>	D29	<i>D292</i>
<i>weight</i>	8.20	8.20	5.02	2.02	2.65	3.70	1.55	2.15	0.42	0.42
January-2018	-1.2	-1.2	12.9	14.3	11.8	1.9	0.7	2.9	26.1	26.1
February-2018	0.4	0.4	11.3	9.4	12.8	1.5	-0.2	3.0	26.1	26.1
March-2018	0.4	0.4	8.6	9.3	8.1	1.6	-0.2	3.0	26.1	26.1
April-2018	0.7	0.7	21.0	36.0	10.6	1.6	-0.2	3.0	26.1	26.1
May-2018	0.4	0.4	20.7	35.7	10.4	2.0	0.2	3.4	26.1	26.1
June-2018	-0.3	-0.3	21.8	38.0	10.8	1.9	-0.2	3.4	26.1	26.1
July-2018	-0.9	-0.9	25.5	47.3	11.1	2.0	0.2	3.4	0.0	0.0
August-2018	-0.5	-0.5	21.5	36.1	11.4	2.0	0.2	3.4	0.0	0.0
September-2018	-0.2	-0.2	16.6	32.7	5.8	0.4	0.2	0.6	0.0	0.0
October-2018	1.8	1.8	16.4	32.7	5.4	0.5	0.4	0.6	0.0	0.0
November-2018	1.7	1.7	16.4	32.7	5.3	0.5	0.4	0.7	0.0	0.0
December-2018	3.1	3.1	16.4	32.8	5.4	1.6	0.8	2.2	0.0	0.0
January-2019	p 2.7	p 2.7	p 16.8	p 32.9	p 5.9	p 1.6	p 0.8	p 2.2	p 0.0	p 0.0

p: provisional

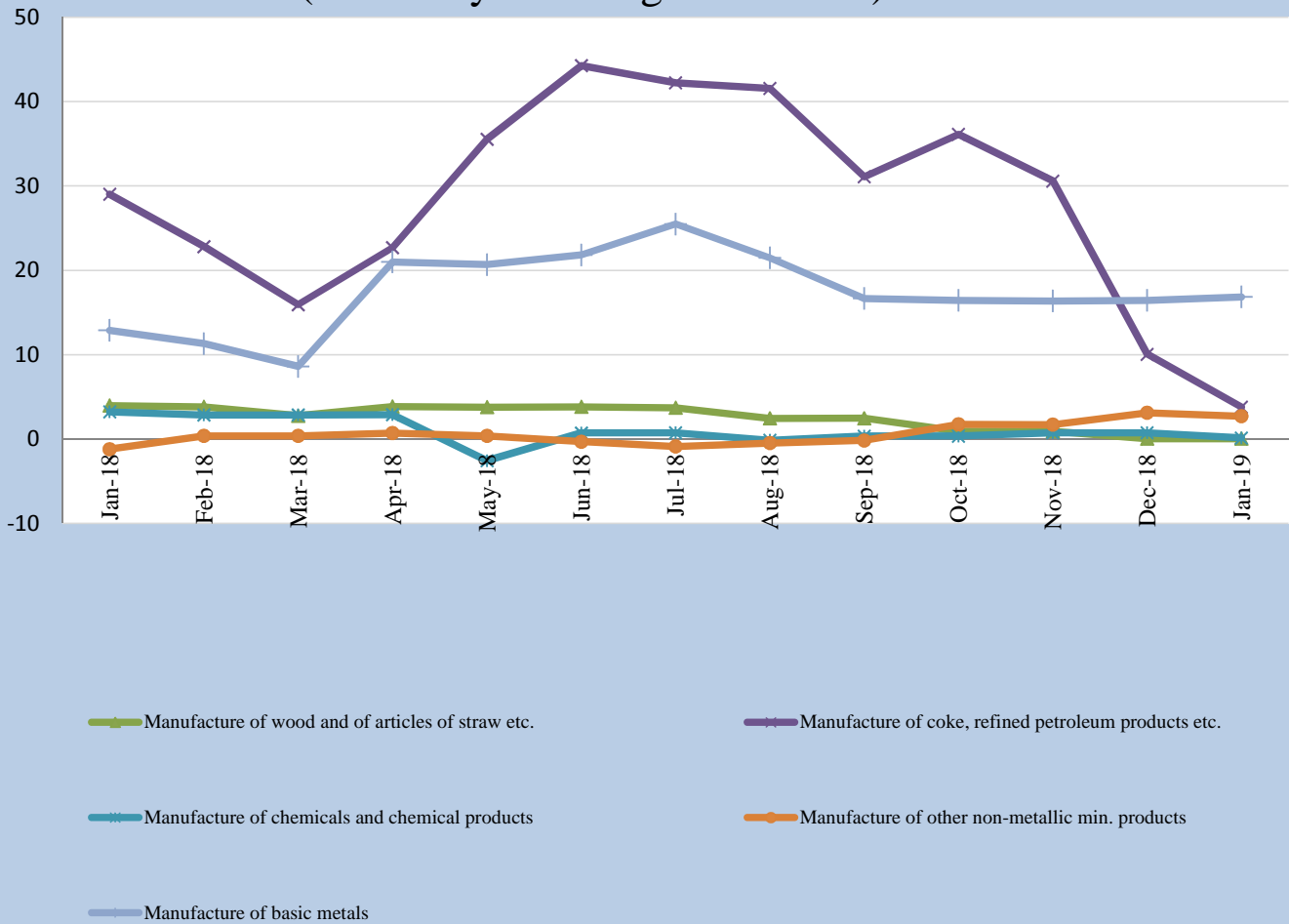
Table 9: Manufacturing: Yearly Change Rates for January 2018 - January 2019 (%)

contd.

Year / Month	Manufacture of electrical machinery and apparatus n.e.c.	Manufacture of insulated wire and cable	Manufacture of motor vehicles, trailers and semi-trailers	Manufacture of bodies for motor vehicles, trailers and semi-trailers	Manufacture of furniture; manufacturing n.e.c.	Manufacture of furniture	Manufacturing n.e.c.
<i>ISIC</i>	D31	D313	D34	D342	D36	D361	D369
<i>weight</i>	0.41	0.41	0.05	0.05	2.44	2.33	0.11
January-2018	3.7	3.7	19.8	19.8	12.3	11.8	28.5
February-2018	3.6	3.6	14.6	14.6	12.2	11.8	26.0
March-2018	3.3	3.3	13.5	13.5	11.5	11.8	4.4
April-2018	3.4	3.4	20.1	20.1	11.5	11.7	4.1
May-2018	3.4	3.4	15.8	15.8	1.8	1.7	4.1
June-2018	3.3	3.3	8.2	8.2	1.1	1.1	1.0
July-2018	3.4	3.4	9.2	9.2	1.2	1.2	1.0
August-2018	3.4	3.4	6.2	6.2	1.2	1.2	1.0
September-2018	1.1	1.1	7.0	7.0	3.7	3.8	1.0
October-2018	1.1	1.1	8.0	8.0	3.7	3.8	1.0
November-2018	1.1	1.1	6.7	6.7	3.7	3.8	1.0
December-2018	1.1	1.1	6.2	6.2	2.8	2.9	1.3
January-2019	p 0.1	p 0.1	p 4.7	p 4.7	p 4.3	p 4.4	p 1.7

p: provisional

PPI Inflation for selected subgroups in the Manufacturing Sector (Year-on-year change rates in %)



Ghana Statistical Service (GSS)

Table 10: Manufacturing: Monthly Change Rates for January 2018 - January 2019 (%)

Year / Month	Manufacturing	Manufacture of food products and beverages	Production, processing, preservation of meat, fish, fruit, vegetables, oils and fats	Manufacture of dairy products	Manufacture of grain mill products, starch products, and prepared animal feeds	Manufacture of other food products	Manufacture of beverages	Manufacture of textiles	Spinning, weaving and finishing of textiles
ISIC	D	D15	D151	D152	D153	D154	D155	D17	D171
weight	100	25.64	4.60	4.31	4.66	4.80	7.27	4.27	4.28
January-2018	0.8	0.0	0.1	0.0	0.0	0.0	0.0	7.0	7.0
February-2018	0.0	-0.1	-0.9	0.0	0.0	0.0	0.0	0.0	0.0
March-2018	-0.2	0.1	-0.3	0.0	0.0	1.6	0.0	0.1	0.1
April-2018	1.2	0.1	0.1	0.0	0.0	1.0	0.0	0.1	0.1
May-2018	1.5	-0.3	-1.9	0.0	0.0	0.0	0.0	0.8	0.8
June-2018	1.6	0.3	1.6	0.0	0.0	0.1	0.0	0.1	0.1
July-2018	0.2	0.9	3.8	0.0	0.0	0.4	0.9	3.3	3.3
August-2018	0.2	-0.3	-1.8	0.0	0.0	0.1	0.0	0.1	0.1
September-2018	0.5	0.9	1.1	0.0	1.8	4.2	0.0	-0.1	-0.1
October-2018	2.1	0.1	0.7	0.0	0.0	0.1	0.0	0.0	0.0
November-2018	-0.9	-0.1	-0.6	0.0	0.0	0.0	0.0	0.0	0.0
December-2018	-2.4	-0.4	-2.4	0.0	0.0	0.0	0.0	0.0	0.0
January-2019	p -0.7	p 1.1	p 6.3	p 0.0	p 0.0	p 1.3	p 0.0	p 0.1	p 0.1

p: provisional

Table 10: Manufacturing: Monthly Change Rates for January 2018 - January 2019 (%)

contd.

Year / Month	Tanning of leather; manu facture of luggage, etc	Manufacture of footwear	Manufacture of wood an of articles of straw etc.	Sawmilling and planing of wood	Manufacture of products of wood, cork, straw etc.	Manufacture of paper and paper products	Manufacture of paper and paper products	Publishing, printing and reproduction of rec. media	Publishing	Printing and service activities ...
<i>ISIC</i>	D19	<i>D192</i>	D20	<i>D201</i>	<i>D202</i>	D21	<i>D210</i>	D22	<i>D221</i>	<i>D222</i>
<i>weight</i>	0.12	<i>0.12</i>	9.03	<i>4.94</i>	<i>4.10</i>	0.62	<i>0.62</i>	1.14	<i>0.40</i>	<i>0.74</i>
January-2018	0.0	0.0	0.0	0.0	0.2	0.0	0.0	0.5	0.0	0.7
February-2018	0.0	0.0	0.0	0.0	-0.1	0.0	0.0	0.0	0.0	0.0
March-2018	0.0	0.0	0.0	0.0	0.0	0.0	0.0	0.0	0.0	0.0
April-2018	0.0	0.0	0.0	0.0	0.0	0.0	0.0	2.7	0.0	4.2
May-2018	0.0	0.0	-0.1	0.0	-0.2	0.0	0.0	0.0	0.0	0.0
June-2018	0.0	0.0	0.0	0.0	0.1	0.1	0.1	0.0	0.0	0.0
July-2018	0.0	0.0	0.1	0.0	0.2	0.6	0.6	0.0	0.0	0.0
August-2018	0.0	0.0	0.0	0.0	0.0	0.1	0.1	0.0	0.0	0.0
September-2018	0.0	0.0	0.0	0.0	0.0	0.1	0.1	0.0	0.0	0.0
October-2018	0.0	0.0	0.0	0.0	0.1	0.1	0.1	0.0	0.0	0.0
November-2018	0.0	0.0	0.0	0.0	-0.1	0.0	0.0	0.0	0.0	0.0
December-2018	0.0	0.0	0.0	0.0	0.0	0.0	0.0	0.0	0.0	0.0
January-2019	p 0.0	p 0.0	p 0.0	p 0.0	p 0.1	p 0.2	p 0.2	p 0.0	p 0.0	p 0.0

p: provisional

Table 10: Manufacturing: Monthly Change Rates for January 2018 - January 2019 (%)

contd.

Year / Month	Manufacture of coke, refined petroleum products etc.	Manufacture of refined petroleum products	Manufacture of chemicals and chemical products	Manufacture of basic chemicals	Manufacture of other chemical products	Manufacture of man-made fibres	Manufacture of rubber and plastics products	Manufacture of rubber products	Manufacture of plastics products
<i>ISIC</i>	D23	<i>D232</i>	D24	<i>D241</i>	<i>D242</i>	<i>D243</i>	D25	<i>D251</i>	<i>D252</i>
<i>weight</i>	22.94	<i>22.94</i>	10.15	<i>0.54</i>	<i>9.45</i>	<i>0.16</i>	3.90	<i>0.76</i>	<i>3.14</i>
January-2018	1.4	1.4	0.6	0.4	0.6	0.0	1.8	10.9	0.0
February-2018	0.2	0.2	0.0	0.0	0.0	0.0	-1.5	-8.1	0.0
March-2018	-1.1	-1.1	0.0	0.0	0.0	0.0	0.0	-0.1	0.0
April-2018	3.2	3.2	0.0	0.0	0.0	0.0	-0.8	-4.2	0.0
May-2018	6.9	6.9	0.0	0.1	0.0	0.0	-0.2	-1.3	0.0
June-2018	6.4	6.4	0.1	0.6	0.1	0.0	-0.8	-4.5	0.0
July-2018	-1.4	-1.4	0.0	2.1	0.0	0.0	1.2	6.4	0.1
August-2018	0.6	0.6	0.0	0.7	0.0	0.0	0.0	0.0	0.1
September-2018	0.5	0.5	0.0	0.5	0.0	0.0	0.3	1.3	0.0
October-2018	7.9	7.9	0.0	0.4	0.0	0.0	0.1	0.4	0.0
November-2018	-3.6	-3.6	0.0	0.0	0.0	0.0	0.0	0.0	0.0
December-2018	-10.1	-10.1	0.0	0.3	0.0	0.0	2.2	0.3	2.6
January-2019	p -4.4	p -4.4	p 0.0	p 0.8	p 0.0	p 0.0	p 0.2	p 0.9	p 0.1

p: provisional

Table 10: Manufacturing: Monthly Change Rates for January 2018 - January 2019 (%)

contd.

Year / Month	Manufacture of other non-metallic min. products	Manufacture of non-metallic mineral products n.e.c.	Manufacture of basic metals	Manufacture of basic iron and steel	Manufacture of basic precious and non-ferrous metals	Manufacture of fabricated metal products, ...	Manufacture of structural metal products, tanks, reservoirs ...	Manufacture of other fabricated metal products ...	Manufacture of machinery ... n.e.c.	Manufacture of special-purpose machinery
<i>ISIC</i>	D26	<i>D269</i>	D27	<i>D271</i>	<i>D272</i>	D28	<i>D281</i>	<i>D289</i>	D29	<i>D292</i>
<i>weight</i>	8.20	8.20	5.02	2.02	2.65	3.70	1.55	2.15	0.42	0.42
January-2018	0.5	0.5	0.0	0.0	0.1	0.0	0.0	0.0	0.0	0.0
February-2018	0.0	0.0	1.2	0.0	2.1	0.0	0.0	0.1	0.0	0.0
March-2018	0.0	0.0	0.0	0.0	0.0	0.0	0.0	0.0	0.0	0.0
April-2018	0.1	0.1	9.7	24.1	-0.1	0.0	0.0	0.0	0.0	0.0
May-2018	-0.2	-0.2	0.0	0.0	0.1	0.0	0.0	0.0	0.0	0.0
June-2018	0.2	0.2	0.6	0.9	0.4	0.0	0.0	0.0	0.0	0.0
July-2018	-0.6	-0.6	3.7	6.7	1.5	0.2	0.4	0.0	0.0	0.0
August-2018	0.9	0.9	0.3	0.1	0.5	0.0	0.0	0.0	0.0	0.0
September-2018	0.3	0.3	-0.1	-0.8	0.4	0.7	0.0	1.2	0.0	0.0
October-2018	1.9	1.9	0.2	0.0	0.3	0.0	0.0	0.0	0.0	0.0
November-2018	-0.1	-0.1	0.0	0.0	0.0	0.0	0.0	0.0	0.0	0.0
December-2018	0.1	0.1	0.1	0.0	0.2	0.7	0.4	0.8	0.0	0.0
January-2019	p 0.1	p 0.1	p 0.4	p 0.1	p 0.6	p 0.0	p 0.0	p 0.0	p 0.0	p 0.0

p: provisional

Table 10: Manufacturing: Monthly Change Rates for January 2018 - January 2019 (%)

contd.

Year / Month	Manufacture of electrical machinery and apparatus n.e.c.	Manufacture of insulated wire and cable	Manufacture of motor vehicles, trailers and semi-trailers	Manufacture of bodies for motor vehicles, trailers and semi-trailers	Manufacture of furniture; manufacturing n.e.c.	Manufacture of furniture	Manufacturing n.e.c.
<i>ISIC</i>	D31	<i>D313</i>	D34	<i>D342</i>	D36	<i>D361</i>	<i>D369</i>
<i>weight</i>	0.41	<i>0.41</i>	0.05	<i>0.05</i>	2.44	<i>2.33</i>	<i>0.11</i>
January-2018	1.0	1.0	3.4	3.4	0.1	0.1	0.0
February-2018	0.0	0.0	-1.2	-1.2	0.0	0.0	0.0
March-2018	0.0	0.0	2.1	2.1	0.0	0.0	0.0
April-2018	0.0	0.0	-0.7	-0.7	0.0	0.0	0.0
May-2018	0.0	0.0	-3.6	-3.6	0.0	0.0	0.0
June-2018	0.0	0.0	1.1	1.1	0.0	0.0	0.0
July-2018	0.0	0.0	4.3	4.3	0.1	0.1	0.0
August-2018	0.0	0.0	0.0	0.0	0.0	0.0	0.0
September-2018	0.0	0.0	-0.4	-0.4	2.5	2.6	0.0
October-2018	0.0	0.0	1.6	1.6	0.0	0.0	0.0
November-2018	0.0	0.0	-1.0	-1.0	0.0	0.0	0.0
December-2018	0.0	0.0	0.6	0.6	0.0	0.0	1.3
January-2019	p 0.0	p 0.0	p 1.9	p 1.9	p 1.5	p 1.6	p 0.4

p: provisional

Table 11: Utilities: Producer Price Index (Sept 2006=100) for January 2018 - January 2019

Year / Month	Electricity and water supply (Utilities)	Electricity supply	Production, transmission and distribution of electricity	Water supply	Collection, purification and distribution of water
<i>ISIC</i>	<i>E</i>	<i>E40</i>	<i>E401</i>	<i>E41</i>	<i>E410</i>
<i>weight</i>	100.00	93.25	93.25	6.75	6.75
January-2018	797.3	794.7	794.7	834.4	834.4
February-2018	796.9	794.4	794.4	834.4	834.4
March-2018	792.8	789.9	789.9	834.4	834.4
April-2018	792.7	789.8	789.8	834.4	834.4
May-2018	792.8	789.9	789.9	834.4	834.4
June-2018	793.2	790.4	790.4	834.4	834.4
July-2018	794.8	792.1	792.1	834.4	834.4
August-2018	795.3	792.7	792.7	834.4	834.4
September-2018	795.7	793.1	793.1	834.4	834.4
October-2018	796.0	793.4	793.4	834.4	834.4
November-2018	796.0	793.4	793.4	834.4	834.4
December-2018	796.2	793.6	793.6	834.4	834.4
January-2019	p 796.9	p 794.3	p 794.3	p 834.4	p 834.4

p: provisional

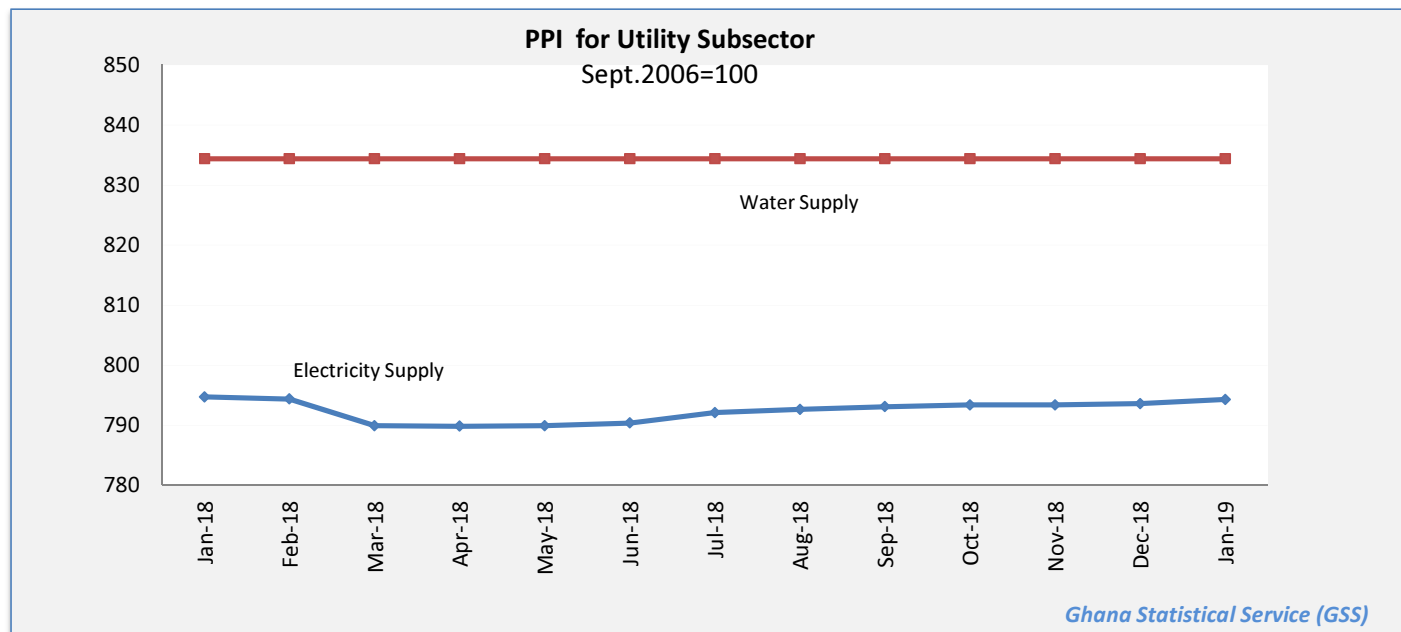


Table 12: Utilities: Yearly Change Rates for January 2018 - January 2019 (%)

Year / Month	Electricity and water supply (Utilities)	Electricity supply	Production, transmission and distribution of electricity	Water supply	Collection, purification and distribution of water
<i>ISIC</i>	<i>E</i>	<i>E40</i>	<i>E401</i>	<i>E41</i>	<i>E410</i>
<i>weight</i>	<i>100.00</i>	<i>93.25</i>	<i>93.25</i>	<i>6.75</i>	<i>6.75</i>
January-2018	0.2	0.2	0.2	0.0	0.0
February-2018	0.0	0.0	0.0	0.0	0.0
March-2018	-0.6	-0.7	-0.7	0.0	0.0
April-2018	-0.3	-0.3	-0.3	0.0	0.0
May-2018	-0.4	-0.4	-0.4	0.0	0.0
June-2018	-0.4	-0.4	-0.4	0.0	0.0
July-2018	-0.2	-0.3	-0.3	0.0	0.0
August-2018	-0.2	-0.2	-0.2	0.0	0.0
September-2018	-0.2	-0.2	-0.2	0.0	0.0
October-2018	-0.1	-0.1	-0.1	0.0	0.0
November-2018	-0.1	-0.1	-0.1	0.0	0.0
December-2018	-0.1	-0.1	-0.1	0.0	0.0
January-2019	p 0.0	-p 0.1	-p 0.1	p 0.0	p 0.0

p: provisional

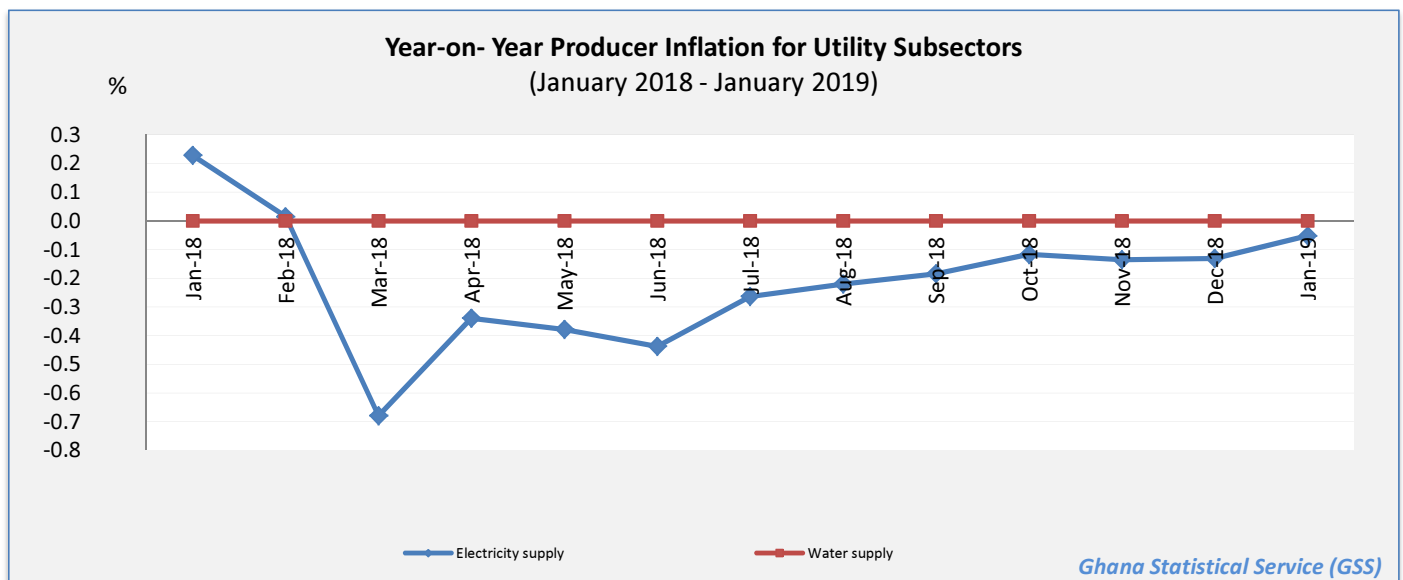


Table 13: Utilities: Monthly Change Rates for January 2018 - January 2019 (%)

Year / Month	Electricity and water supply (Utilities)	Electricity supply	Production, transmission and distribution of electricity	Water supply	Collection, purification and distribution of water
<i>ISIC</i>	<i>E</i>	<i>E40</i>	<i>E401</i>	<i>E41</i>	<i>E410</i>
<i>weight</i>	100.00	93.25	93.25	6.75	6.75
January-2018	0.0	0.0	0.0	0.0	0.0
February-2018	0.0	0.0	0.0	0.0	0.0
March-2018	-0.5	-0.6	-0.6	0.0	0.0
April-2018	0.0	0.0	0.0	0.0	0.0
May-2018	0.0	0.0	0.0	0.0	0.0
June-2018	0.1	0.1	0.1	0.0	0.0
July-2018	0.2	0.2	0.2	0.0	0.0
August-2018	0.1	0.1	0.1	0.0	0.0
September-2018	0.1	0.1	0.1	0.0	0.0
October-2018	0.0	0.0	0.0	0.0	0.0
November-2018	0.0	0.0	0.0	0.0	0.0
December-2018	0.0	0.0	0.0	0.0	0.0
January-2019	p 0.1	p 0.1	p 0.1	p 0.0	p 0.0

p: provisional

